



*Le Mille  
e una Notte™*





4	<b>ROBERTO SEMPRINI</b> Architect
6	<b>LE MILLE E UNA NOTTE</b>
8	<b>JINN</b> Bookcase
16	<b>SHAHRAZĀD</b> Mirror
24	<b>I 7 VIAGGI DI SINDIBĀD</b> Console and Tables
38	<b>SOGNO D'ORIENTE</b> Table





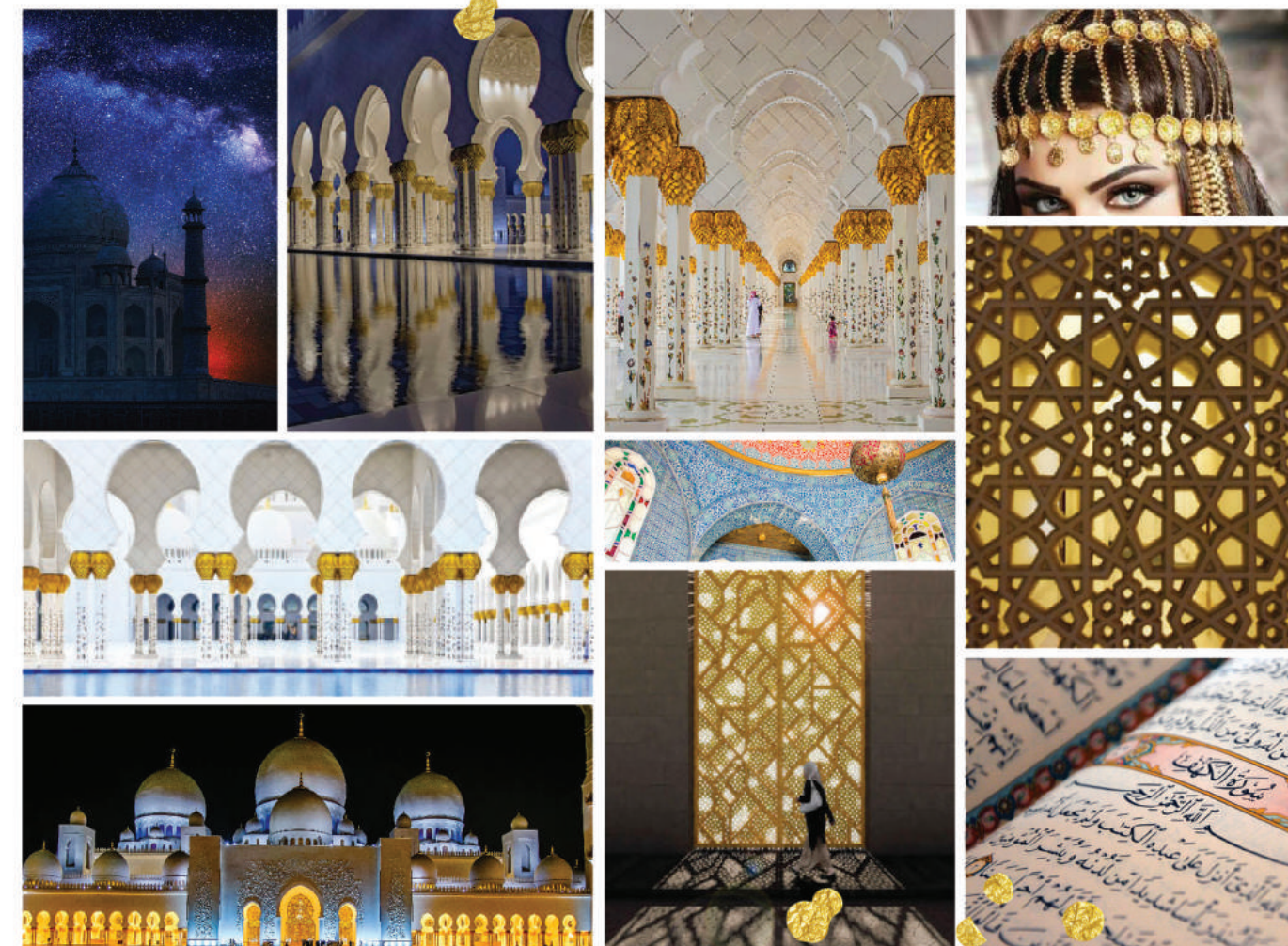
**ROBERTO SEMPRINI**

In 1989 he designed the sofa "Tatlin" which was produced by Edra and it was among the winners of the prestigious TOP TEN in Dusseldorf. In 1994 he designed the table "Manta" produced by Fiam. It was one of the winners of the Young & Design awards.

His products are part of the permanent collection of the Montreal Museum of Decorative Arts in Canada and the New Museum of Design in London. In 2000 he moved to Rimini, where he opened "RM 12 Art & Design" which is a gallery and studio of Design.

Since 2006, the studio has realised high-impact projects in both domestic and public spaces. Some of these projects include the design of stands at the following exhibitions: Sia in Rimini, the Fuori Salone in Milano, the Abitare il Tempo in Verona, the Sun in Rimini. In 2007 he was invited by the Seoul Living Design Fair (Korea) to exhibit "The Italian / Korean house".

He has collaborated with numerous design firms like Fiam, Moroso, Alivar, Rede Guzzini, Edra, Slide, Contempo, Dilmos, Pedrali, Morelato, Morfeus, Scab, Valdichienti, Edilco Scale, L2, Mastella, Marchetti Illuminazioni. He has given lectures and seminars in various faculties of design such as the Faculty of Architecture of Florence, at Milan Polytechnic, the School of Engineering, University of Bologna, the IED Milan, the I. A.V. of Orleans and the School Elisava Barcelona, Politecnico of Milan. For over ten years he has been the role of Professor in the Artistic Design Course for Enterprise Accademia di Belle Arti di Brera (Milan) and currently at the Accademia di Belle Arti di Bologna and Professor for Chiara Fama of Outdoor Design course at the Politecnico di Milano.







## LE MILLE E UNA NOTTE™

The “**Le Mille e una Notte**” collection is inspired by the famous collection of oriental stories. The number “one thousand” in Arab means “infinite”, so 1001 signifies an infinite number. Thinking along those lines, with this collection we want to create unique pieces, capable of strongly characterizing the most representative locations of each place. It is a collection that combines the East and West, where the suggestions of the Arab culture are reinterpreted and transmuted through the creativity of an Italian architect, able to wonderfully blend these two worlds into one. This is how an ancient world takes shape, a world very similar to that described in the stories extolled for centuries in “**Le Mille e una Notte**”.

Oriental inspired decorations and colours blend with the essential beauty of Italian design. This gave birth to a collection made up of oxymorons, where two distant worlds come together, traditional materials are combined with new technologies, the open merges with the closed, and the transparent blends with the opaque to stage a truly magical scene of shapes and colors.



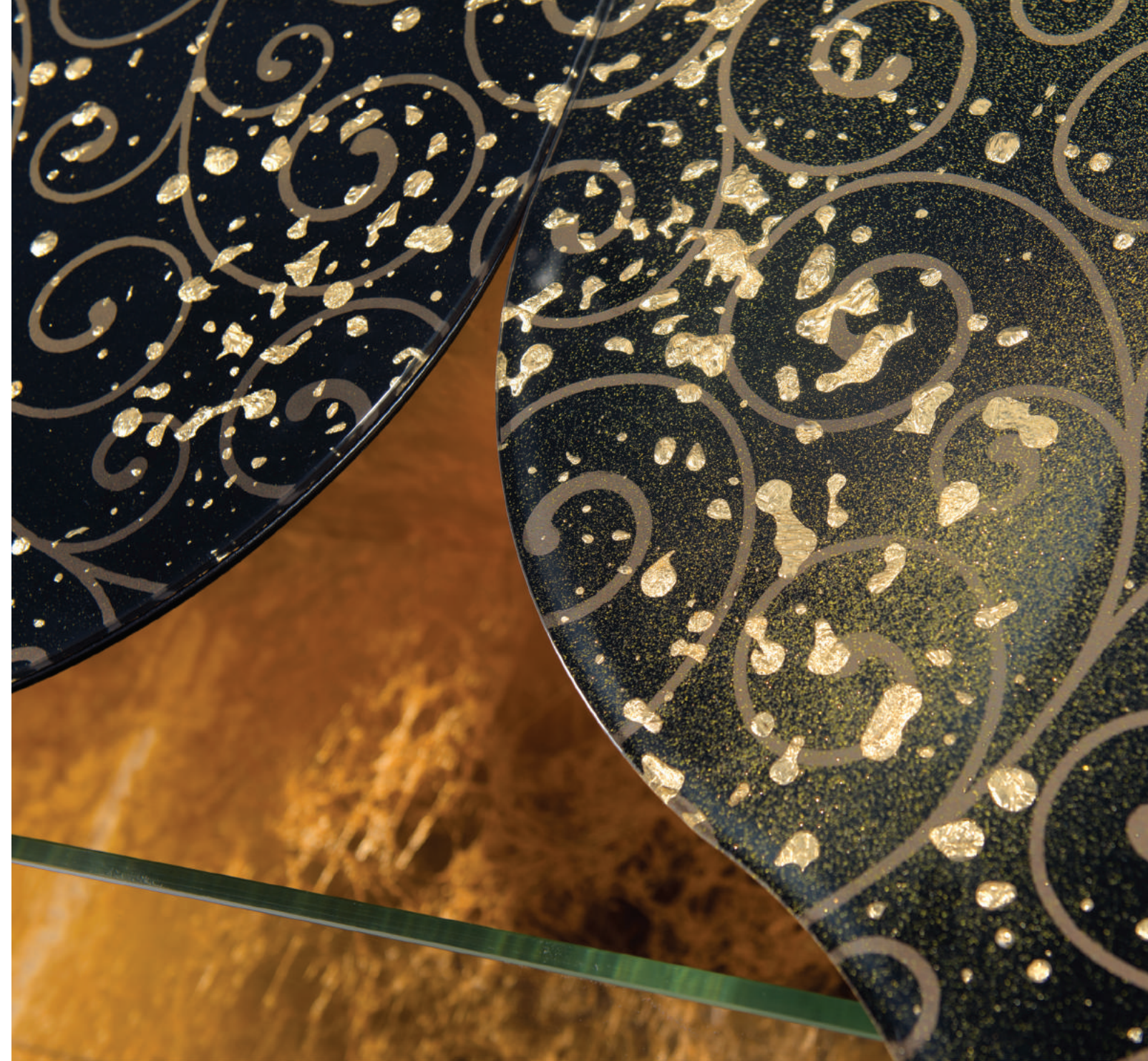
“

*A sudden gesture, a laugh, and he  
disappears. A mystery, three questions,  
a wish fulfilled.*

*An instant of wonder, a dream under the  
stars. Ethereal presence, golden dust  
in the magic of the night.*

”

*Le Mille  
e una Notte™*  
JINN





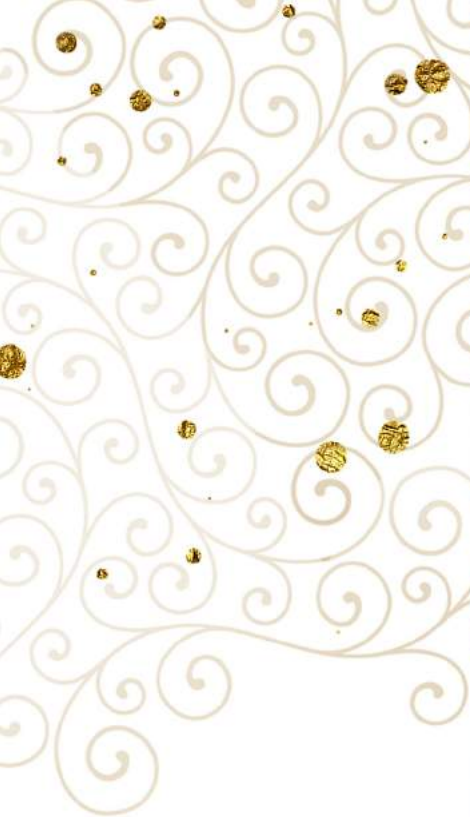


## JINN™

The “genie in the lamp” that permeates ancient middle-eastern tales has literally conquered our creative artists, who dedicated a line of products to it. Mercurial, powerful, and mysterious, this fairy-tale character embodies the magic of a culture lost among the desert dunes beaten by the winds. The “Jinn” series incorporates these suggestions, expressed in a shape resembling a door opening onto a world of wonders, the gateway to the Earthly Paradise, a place permeated with golden light that promises peace and serenity to all those who enter.

“Jinn” provides a modern twist to the images and suggestions of the ancient eastern world, to relive the magic and atmospheres of the time and a faraway location. The most varied representations of the oriental arch play the starring role and area a source of inspiration for the designers of this line, who seek to enhance its beauty and symbolic charm.





BOOKCASE  
JINN





# JINN™

“LE MILLE E UNA NOTTE” COLLECTION



**Designers** ROBERTO SEMPRINI and UNICA

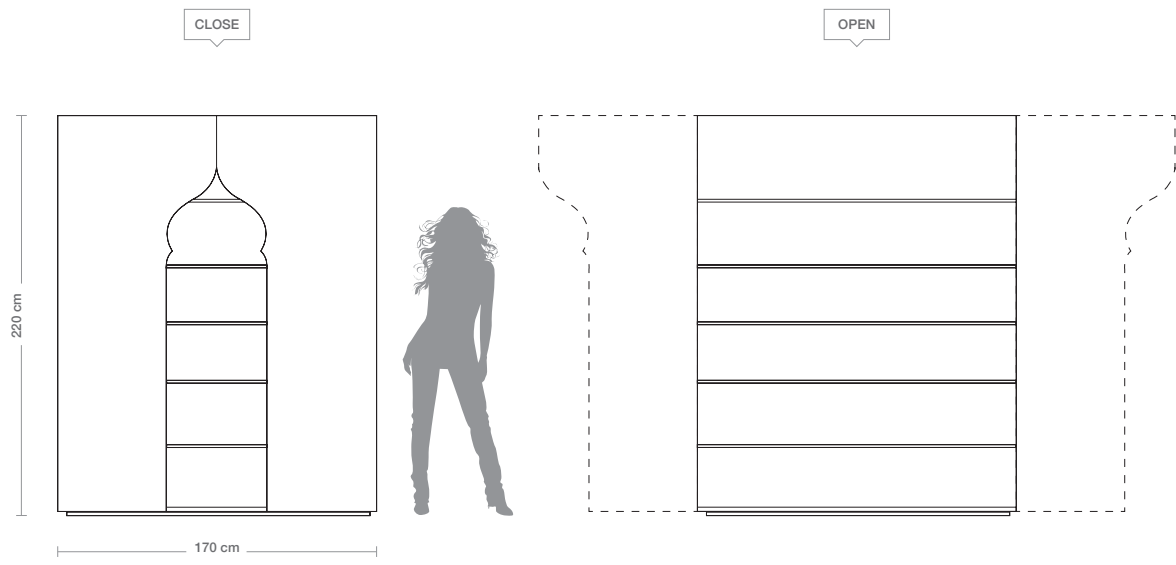
**Product features** Bookcase with extra-clear tempered shaped glass doors, thickness 6 mm., decorated with sandblasting for handmade stars, gold coloured leaf inserts, *Trilli Effect* (golden powder), golden bronze and white / black painting.

Tapered wooden structure with 5 extra-clear tempered glass shelves. Gold coloured leaf finishing inside and glossy white / black lacquering outside.

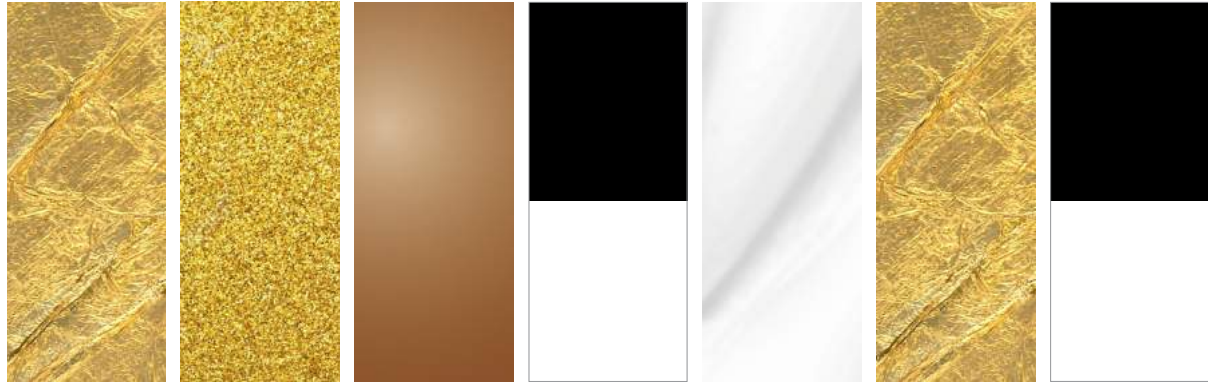
Adjustable interior lighting.

**Dimensions** W. 170 cm H. 220 cm D. 50 cm

**Weight** 380 kg



## Doors



Golden Leaf Trilli Effect Golden Bronze White / Black Painting Sandblasting Golden Leaf White / Black Lacquering

## Frame



“

*Only you, among many.  
A debut, the only one worthy of the  
crown.*

*A solitary star, shining with pure  
golden light. A princess.*

”

*Le Mille  
e una Notte™*  
SHAHRAZĀD





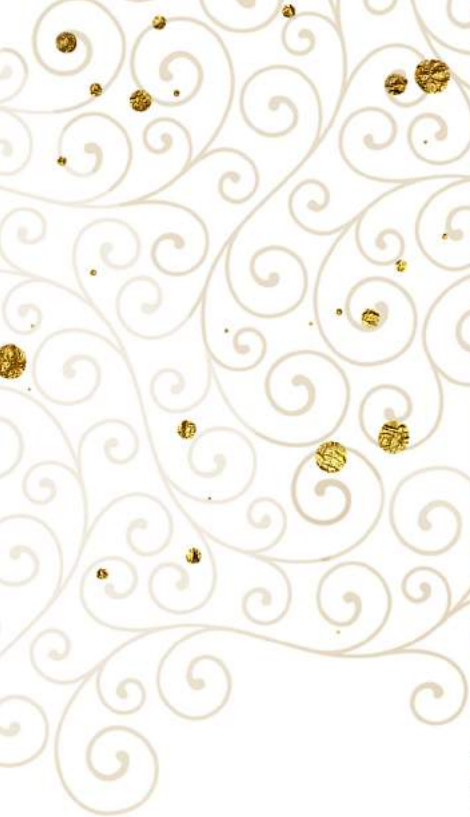


## SHAHRAZĀD™

A design with strong references to Arab culture, almost like the tower of an ancient palace. “Shahrazād” is a complex work, created to embody the suggestions of the Middle East in a piece of furniture the combines practicality and beauty. It is a door opening onto a faraway world, that plays with the surrounding lighting and the *Trilli Effect*. From the idea to the furniture, where the artists’ inspirations are transformed into reality.

The “Shahrazād” mirror takes its place within the room as an element with an exotic character, that combines aesthetic impact with practical function. The surface decorated with golden floral motifs easily becomes part of the space and captures the attention through the superfine *Trilli Effect* dust and the drops of gold-coloured leaf. The central element is a design with strong oriental references, and the way the mirror is inserted in the shape seems to represent the entrance to the Earthly Paradise.





MIRROR  
SHAHRAZĀD BLACK







# SHAHRAZĀD™

“LE MILLE E UNA NOTTE” COLLECTION

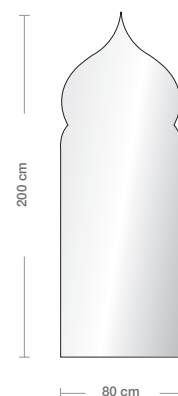
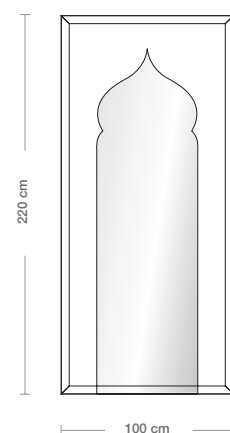
**Designers** ROBERTO SEMPRINI and UNICA

**Product features** Mirror with extra-clear tempered shaped glass panel (version without frame), bevelled glass panel, 5 mm. thickness, decorated with sandblasting for handmade stars, *Trilli Effect* (golden powder), gold coloured leaf inserts, golden bronze and white / black painting.

Tapered wooden frame, 30 mm. thickness, glossy white / black lacquering.

**Dimensions** W. 100 cm H. 220 cm D. 3,5 cm  
**Weight** 70 kg

**Dimensions** W. 80 cm H. 200 cm D. 3,5 cm  
**Weight** 58 kg



## Front Panel



Golden Leaf



Trilli Effect



Golden Bronze



White / Black  
Painting



Sandblasting



Mirror



White / Black  
Lacquering

## Frame



“

*A silent night,  
the company of the stars.  
Lapping water lulling your thoughts.*

*The keel caressed by the gentle waves.  
A glance towards infinity,  
a benevolent moon.*

”

*Le Mille  
e una Notte™*  
I 7 VIAGGI DI SINDIBĀD





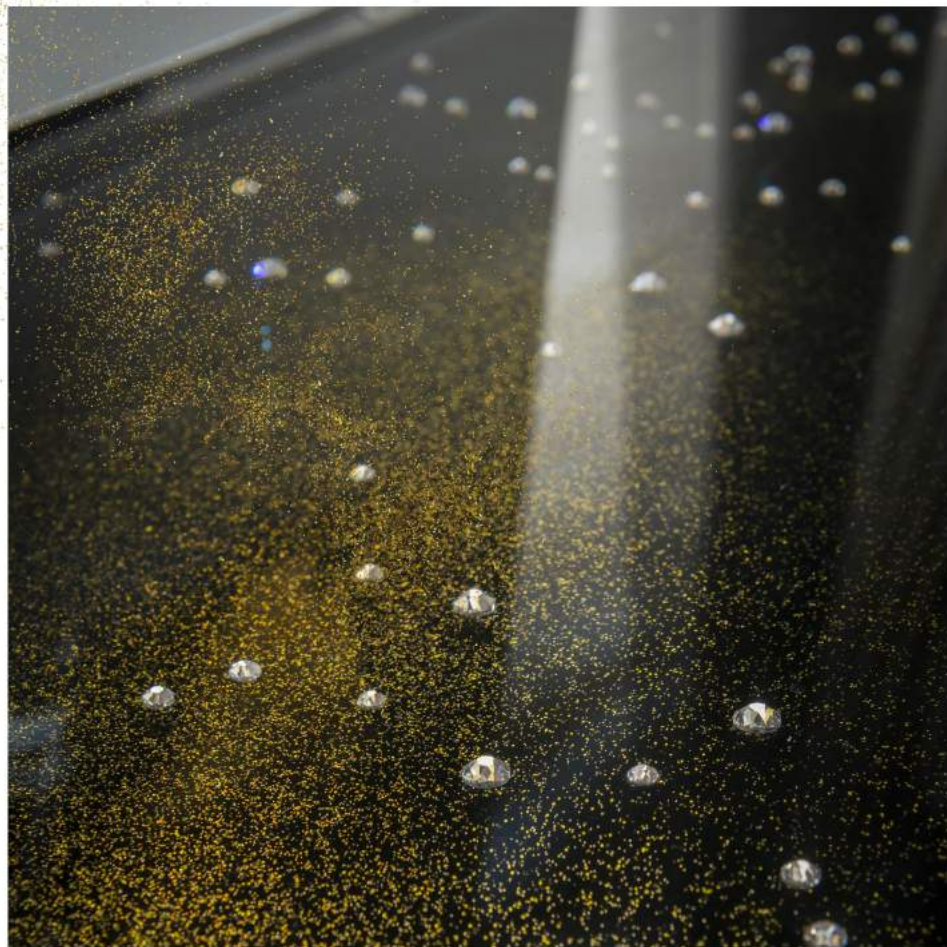


I 7 VIAGGI DI SINDIBĀD™  
CONSOLE - LOW TABLE - HIGH TABLE

The “I 7 Viaggi di Sindibād” series combines various suggestions in a single concept. The idea of a sailor who crosses the sea in an infinite search, step after step, is told in the various works. Each has its own spirit and distinctive characteristics, all sharing the inspiration and desire to narrate a story comprised of many chapters. Everyone can choose where to start the adventure and where to stop.

The tables that make up the “I 7 Viaggi di Sindibād” series seem to evoke the memories of an endless adventure. There are many dimensions, like the stages of the journey, ideal works to fit into any context: consoles, tables for serving or for togetherness... there is a model suitable for every function. The monochromatic surface is embellished with the golden dust of the *Trilli Effect* and Swarovski® crystals of various sizes and intensity and in the console.





CONSOLE  
VIAGGIO I BLACK





CONSOLE  
VIAGGIO I WHITE







TABLE  
VIAGGIO II BLACK



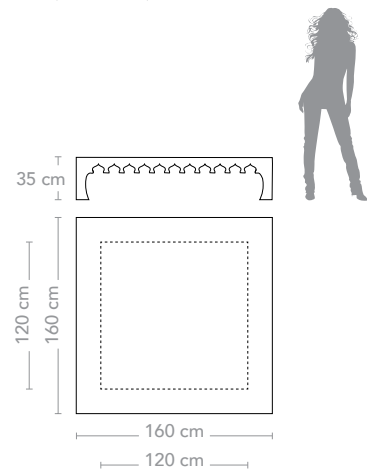
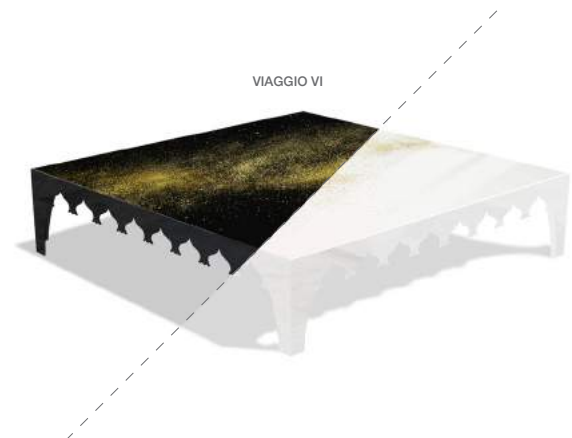
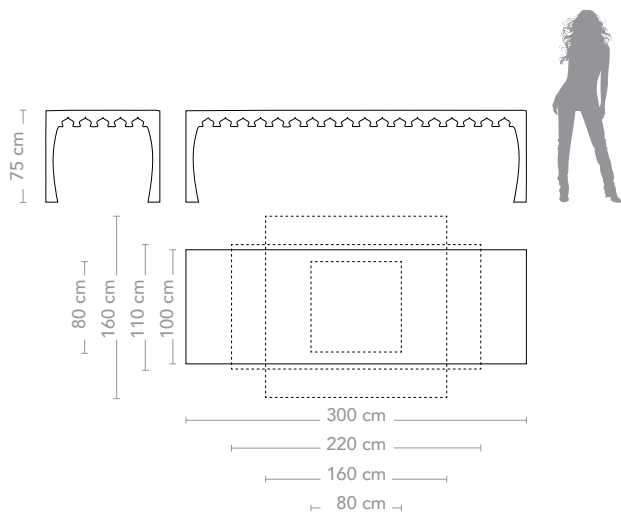
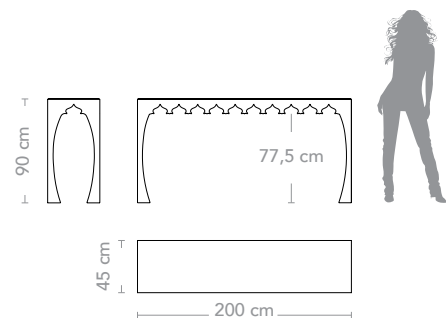
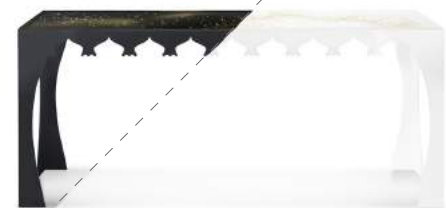
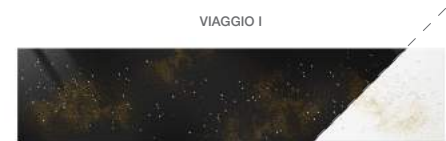




TABLE  
VIAGGIO II WHITE







# I 7 VIAGGI DI SINDIBĀD™

"LE MILLE E UNA NOTTE" COLLECTION

**Designers** ROBERTO SEMPRINI and UNICA

**Product features** Console (Viaggio I) with glass top composed of 2 extra-clear tempered glass sheets with Swarovski® application between them, *Trilli Effect* (golden powder) and white / black painting on the bottom one. Thickness 18 mm.

Tables (Viaggio II, III, IV, V, VI, VII) with extra-clear tempered decorated glass top, thickness 10 mm., with sandblasting for handmade stars, *Trilli Effect* (golden powder) and white / black painting.

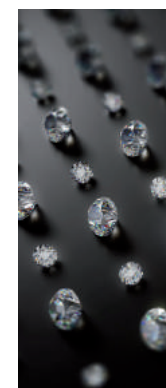
Laser-cut and shaped steel base and glossy white / black lacquering.

**Console Dimensions** W. 200 cm H. 45 cm D. 90 cm VIAGGIO I

**Hight Tables Dimensions**  
W. 300 cm H. 100 cm D. 75 cm VIAGGIO II  
W. 220 cm H. 110 cm D. 75 cm VIAGGIO III  
W. 160 cm H. 160 cm D. 75 cm VIAGGIO IV  
W. 80 cm H. 80 cm D. 75 cm VIAGGIO V

**Low Tables Dimensions**  
W. 160 cm H. 160 cm D. 35 cm VIAGGIO VI  
W. 120 cm H. 120 cm D. 35 cm VIAGGIO VII

**Top**



Swarovski®



Trilli Effect

**Base**



White / Black  
Painting



White / Black  
Lacquering



“

*With eyes closed.  
Dancing stars, nights inspired by the  
warm eastern wind.*

*Quick strokes,  
a story of a thousand words.  
A magical whisper, whirling in the sky.*

”

*Le Mille  
e una Notte™*  
SOGNO D'ORIENTE







## SOGNO D'ORIENTE™

Some works are the synopsis of several suggestions, a sort of compendium of an entire collection encompassed in a single product. "Sogno d'Oriente" is an example of this concept: a starry night observed from the desert while the golden dust dances in the hot wind. The strong influence of the Middle East in the base, formed as an intricate set of Arabic script, gives the work an exotic appeal, and is a union of the ancient and the modern.

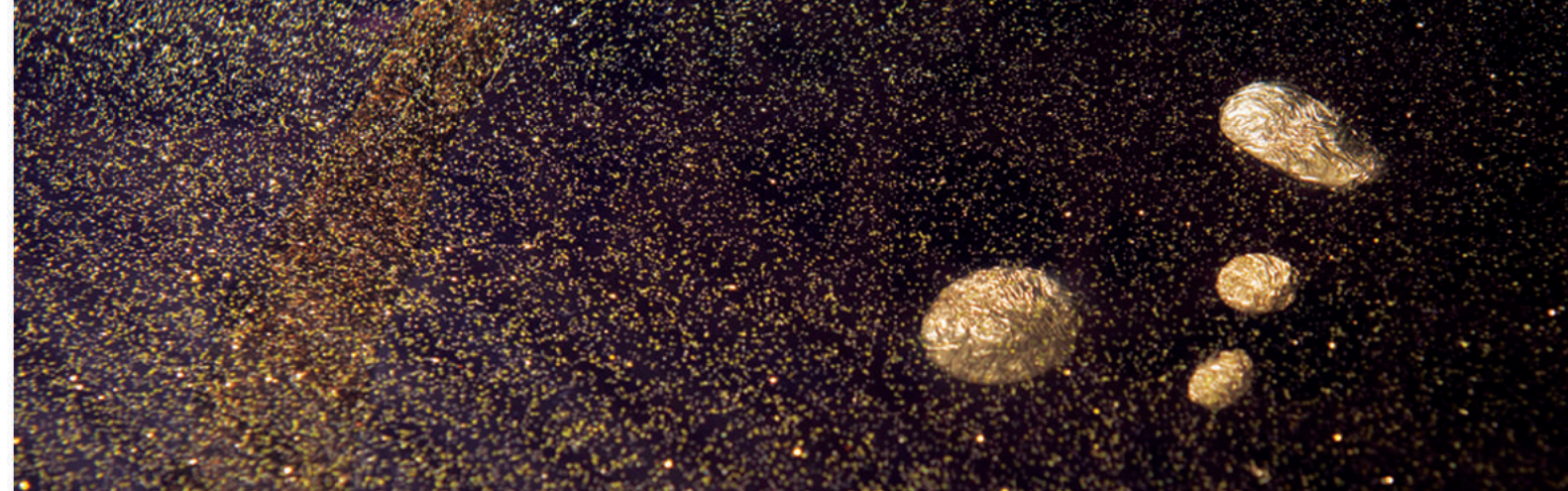
"Sogno d'Oriente" is a large table that captures the attention and enhances the environment. It brings an exotic touch and becomes the central element of an almost magical and inspired togetherness. The glass surface is enriched by a complex design in gold leaf, wrapped in the gold dust that gives it the *Trilli Effect*. There are glimpses of the shape of the base, almost creating a brush mark that crosses the black surface. The golden base is laser-cut in intertwining lines that recall Arabic script.



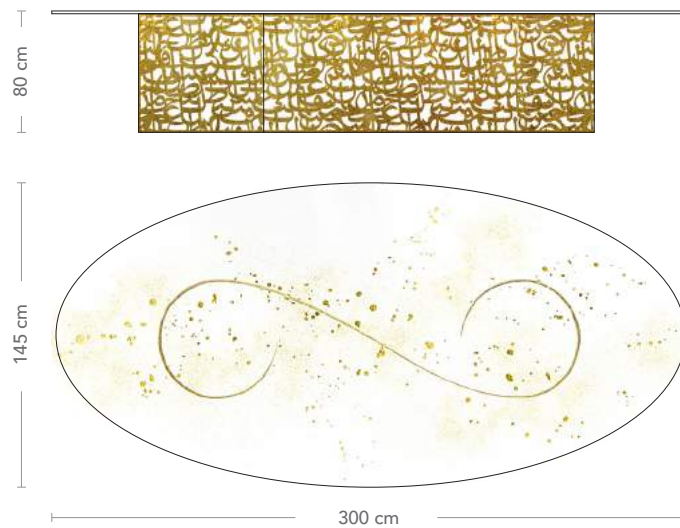
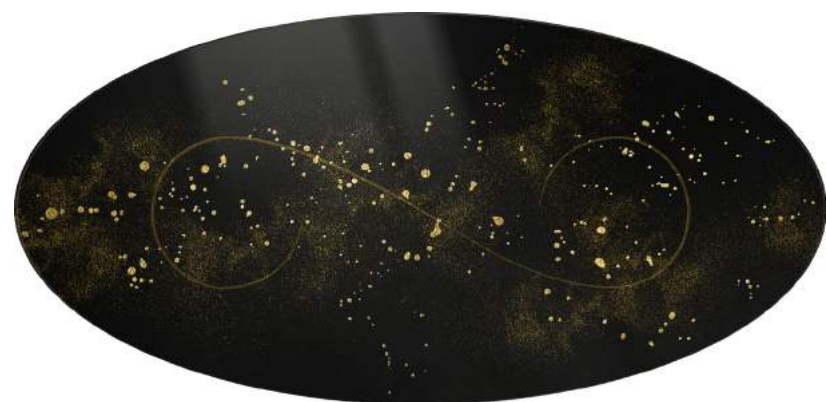


TABLE  
SOGNO D'ORIENTE









# SOGNO D'ORIENTE™

"LE MILLE E UNA NOTTE" COLLECTION

**Designers** ROBERTO SEMPRINI and UNICA

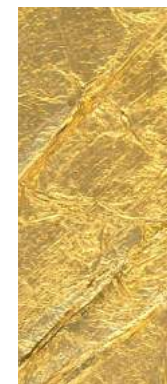
**Product features** Table with smoked extra-clear laminated shaped glass top, thickness 12 mm., decorated with sandblasting for handmade stars, *Trilli Effect* (golden powder), gold coloured leaf inserts.

Laser-cut and shaped steel base with gold coloured leaf finishing.

**Dimensions** W. 300 cm H. 145 cm D. 80 cm

**Weight** 298 kg

**Top**



Golden Leaf



Trilli Effect



Sandblasting



Fumè

**Base**



Golden Leaf





VIA BONAZZI 4, CASTEL MAGGIORE (BO) 40013 ITALY  
T. +39 051/0930627 [INFO@UNICA.BIZ](mailto:INFO@UNICA.BIZ) [WWW.UNICA.BIZ](http://WWW.UNICA.BIZ)



PROJECT CO-FINANCED BY  
CAMERE DI COMMERCIO DELL'EMILIA-ROMAGNA AND BY REGIONE EMILIA-ROMAGNA



UNIONCAMERE  
EMILIA-ROMAGNA



Regione Emilia-Romagna

MADE IN ITALY