



Fremito

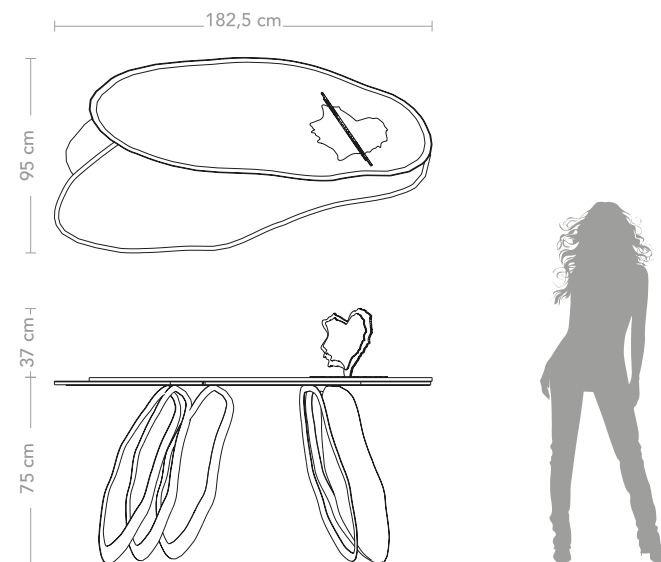
VANITY TABLE "MORPHEUS" COLLECTION

Designers UNICA

Product features Vanity table with extra-clear shaped glass top made with 2 melted and blended glass sheets, thickness 10 mm. each, decorated with *Trilli Effect* (golden powder), digital printing and semi-transparent painting.

Metal structure, thickness 3 mm., decorated with with gold coloured leaf.

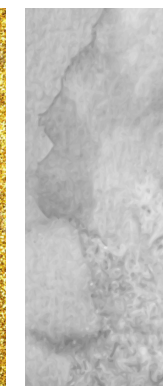
Dimensions L. 182,5 cm W. 95 cm H. 75 cm



Top



Trilli Effect

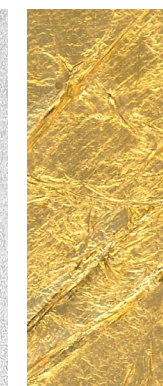


Digital printing



Semi-transparent
painting

Base



Gold coloured
leaf